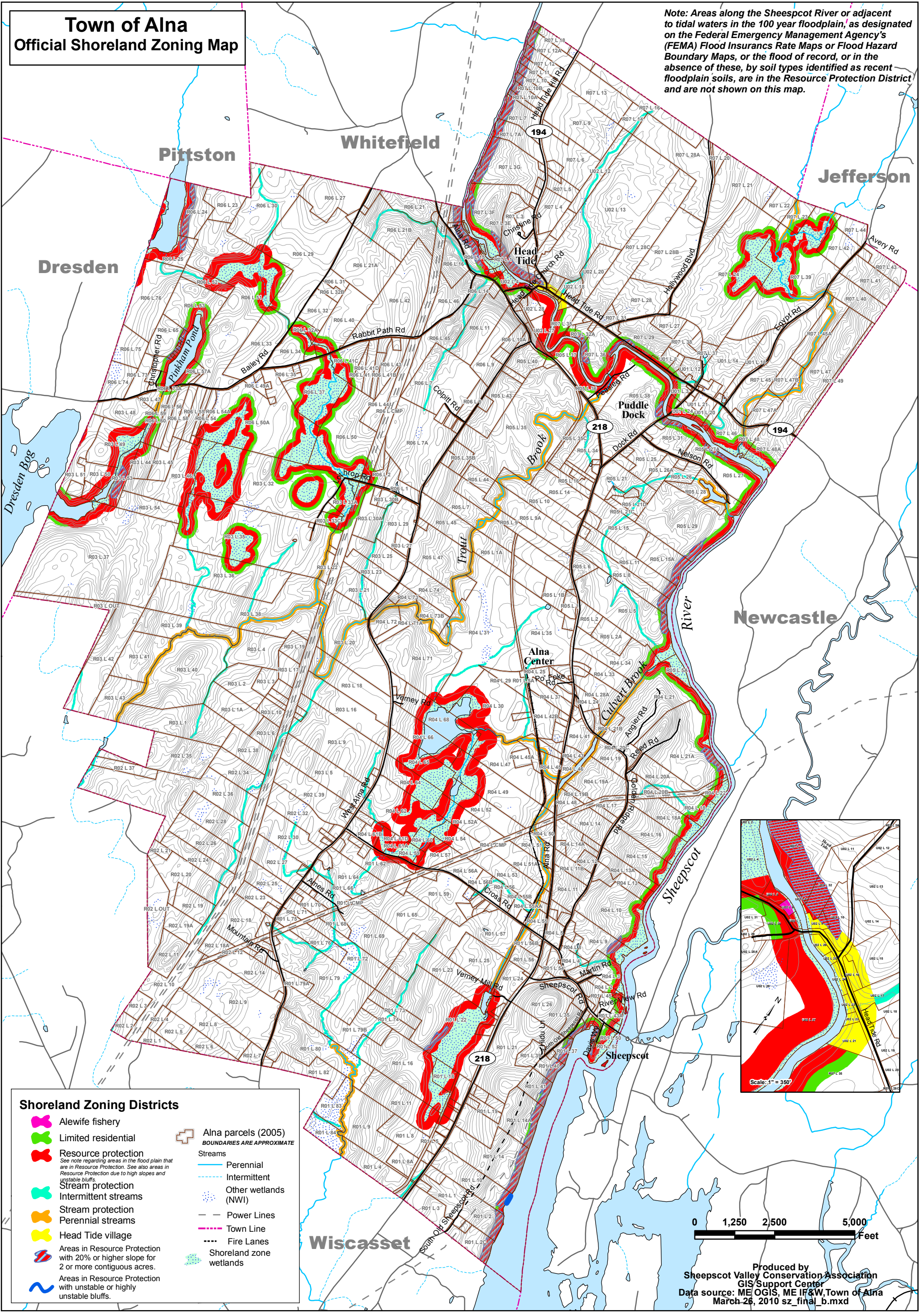


# Town of Alna Official Shoreland Zoning Map

Note: Areas along the Sheepscot River or adjacent to tidal waters in the 100 year floodplain, as designated on the Federal Emergency Management Agency's (FEMA) Flood Insurance Rate Maps or Flood Hazard Boundary Maps, or the flood of record, or in the absence of these, by soil types identified as recent floodplain soils, are in the Resource Protection District and are not shown on this map.

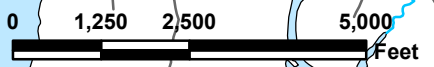
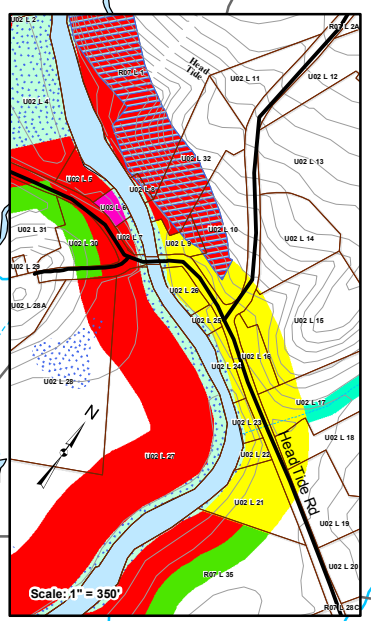


**Shoreland Zoning Districts**

- Alewife fishery
- Limited residential
- Resource protection  
*See note regarding areas in the flood plain that are in Resource Protection. See also areas in Resource Protection due to high slopes and unstable bluffs.*
- Stream protection
- Intermittent streams
- Stream protection
- Perennial streams
- Head Tide village
- Areas in Resource Protection with 20% or higher slope for 2 or more contiguous acres.
- Areas in Resource Protection with unstable or highly unstable bluffs.

**Alna parcels (2005)**  
BOUNDARIES ARE APPROXIMATE

- Streams
- Intermittent
- Other wetlands (NWI)
- Power Lines
- Town Line
- Fire Lanes
- Shoreland zone wetlands



Produced by  
Sheepscot Valley Conservation Association  
GIS Support Center  
Data source: ME OGIS, ME IFA&W, Town of Alna  
March 26, 2010 sz\_final\_b.mxd